

IKHIRSI LUXURY COLLECTION



SANTA LIVES HERE



Lapland is famous as the fatherland of Santa Claus. His permanent residence is located in the Lapland's capital – Rovaniemi. There is the Santa's Chancellery receiving letters and requests for Christmas gifts, the Chief Office where he meets his guests, and the Central Post Office to send greeting cards and gifts to relatives and friends. Santa's resi-dence is always full of guests speaking numerous languages, while his restless assistants buzz around and seem never be asleep.

Every year Rovaniemi hosts Santas' races. The deer races are considered the most difficult stage: not everyone is capable to stop the sledge exactly by the finish line.

In Lapland a traveler gets into the land of children dreams. This is the only place on the Earth where one can meet a real Santa Claus and his helpful dwarves, visit a deer farm, and even have a ride on a dog-drawn sledge.

Deer are the live gold of Lapland. Since ancient times they gave shelter, food, heat and warmth to people living in this region. That is why they are the pride of this land and the heroes of local legends. One of the most marvelous legends is the one about Vaadin, the white deer:

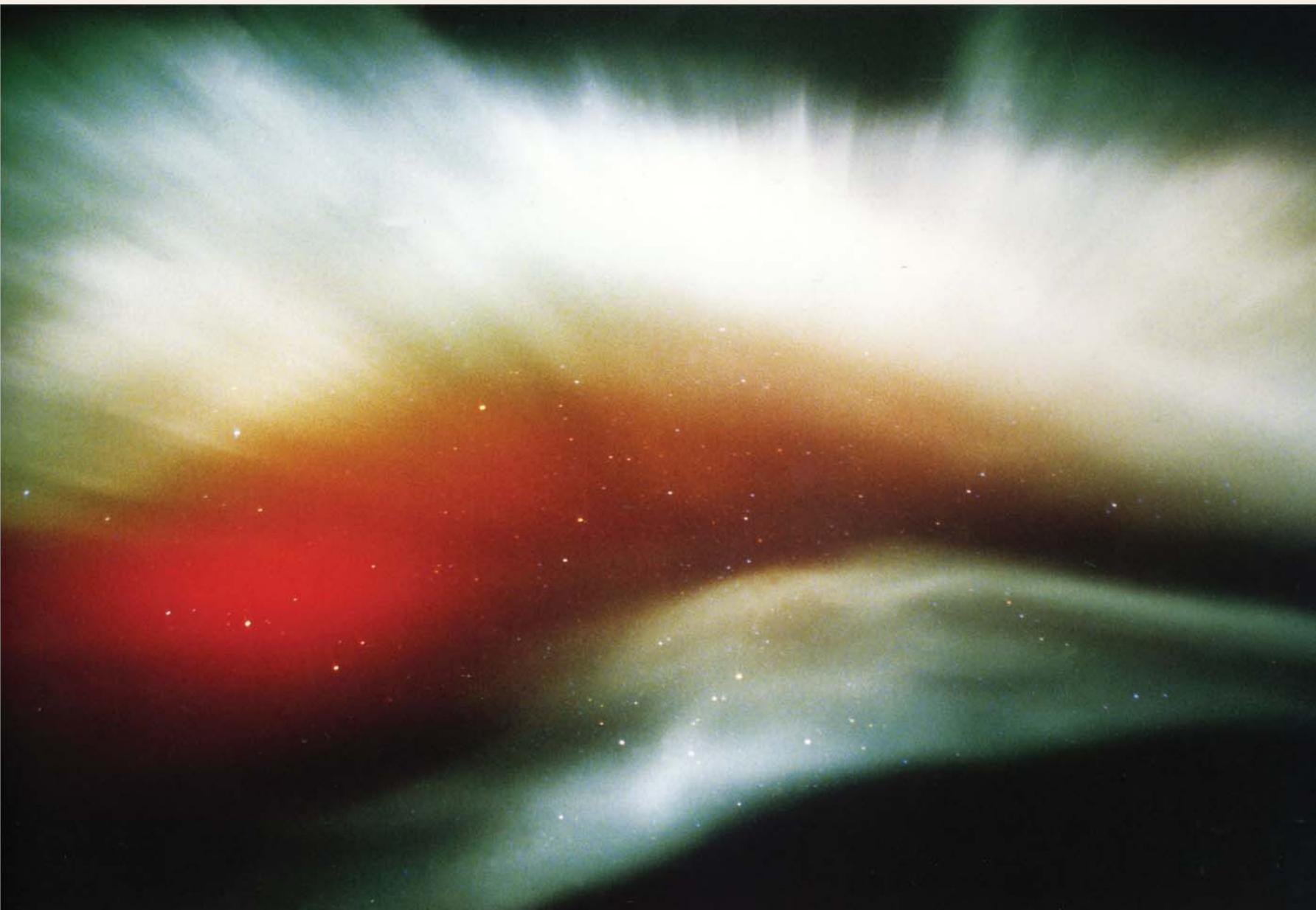
... Once upon a time, there lived a beautiful girl who was turned into a savage deer by an ugly troll that had failed to make her fall in love with him. Many hunters perished urging to acquire the luxurious white deer skin. Once the girl's fiancé tried his luck and the deer wounded him badly. But his blood pouring off the wounds distracted the charms of the ugly troll, and the white deer started to turn back into a pretty girl. So, the young lovers met again and fell together into eternal dream.

Santa's most important skills:

- be agile enough to climb roofs
- throw gifts directly into chimneys
- drive Finnish sledge merrily
- conduct deer



NATURE OF LAPLAND



Seasons in Lapland are unique. In summer Polar day the sun never sets and the Polar night brings such wonders as northern lights. Short autumn exposes the exclusive brightness of natural colors – from green to yellow and from orange to purple red. Lapland's spring is the internal deep blue sky... and crystal clear snow. Such extreme conditions allow the most fantastic ideas like a summer walk under the midnight sun. The "absolute" seasons offer the interminable set of pleasures impossible in customary nature conditions. Each season – spring, summer, autumn and winter – is revealed at its utmost and expresses the true essence of its name. Life changes and gets faster, but the clean and serene nature of Lapland remains untouched.

Seasons in Lapland

For tourists, traditional symbols of Lapland are reindeer, snow, Polar night, northern lights, Santa Claus, vodka, borderless forests, dog-drawn sledge, craftsmen handmade things... All this belongs to the ancient Lapland's culture as well as to the contemporary way of life. Long winters didn't manage to make local people gloomy and sad; on the contrary, people acquired fantastic skillfulness in everything. It's proven by bright colors of their clothes, joyful sports and games, creativity in crafts, love for nature, fishing and domestic animals.

The northern lights are unexplainably beautiful natural phenomenon. It appears only in the distant corners of the Earth like the northern Lapland. It seems to make up for short hot summer and the long Polar night. The entire scheme of color shades shines in the sky, emerging for a second or for the entire minute and overflowing in each other. Only having admired the northern lights, one can fully learn the essence of Lapland's nature. Blue, yellow, crimson, green and red... People there predict the character of the coming year by colors prevailing in the sky: green means more deer fawns, red – bad year, yellow – soft winter. Or these colors may mean just the opposite depending on the interpreter and his personal preferences.



NATIONAL CUISINE

Lapland cuisine was historically formed in accordance with such factors as the insufficiency of resources, distantness of these lands and their severe climate. Local culinary traditions are carefully preserved and proudly demonstrated to all guests of the over-the-Polar-circle-land.

The whole Lapland cuisine is based on the seasonal gifts of nature. It counts innumerable delicious venison soups and main dishes. Hare, partridge, fried elk meat are also popular.

Special attention is paid to the fish dishes of salmon, trout, whitefish and river fish. They are cooked by million of recipes and always have an exclusive taste. The steamed river shrimps are considered a real delicatessen.

Meat and fish dishes are usually furnished with onion and mushrooms. Mushrooms are abundant in local woods in summer. But they are not the only gift of Lapland woods. Northern forests also produce numerous sorts of berries as raspberry, strawberry, blackberry, blueberry, cranberry, cloudberry etc., which are extensively used for sauces, salads, jams, desserts and piquant additives to main dishes.

The marvelous taste of local cheese can be tender and soft or sharp and rough. The most famous purely Lapland cheese is Leipajuusto.

A well-known Russian proverb "Breakfast is for yourself, lunch is to share with a friend, dinner is for the enemy" also fits Finnish meal traditions. In Lapland people prefer a nourishing breakfast accompanied with numerous sorts of bread, including the unique Arctic grey bread or bread baked in clay. Lunch is also abundant, but supper is quite modest having only few cold dishes.

Finnish herring salad

Mince 300 gr of soaked herring filet and mix it with small cubes of marinaded beetroot (about 60 gr). Add two or three cut potatoes, boiled in their skins and cooled beforehand. Add a couple of salted cucumbers, an egg, a bulb onion and 100 gr of minced boiled beef. Mix with black pepper and parsley. The salad is furnished with cream and served in a deep salad dish.

Original sandwiches with kipper salmon are a popular Lapland fast snack.

Another Lapland culinary tradition is to kipper **salmon fish**: filet of a summer salmon, trout, coho salmon, or red salmon is carefully washed and dried with a towel. Then it is evenly sprinkled with coarse ground salt, a bit of sugar, white pepper and dill. Afterwards the filet is thoroughly wrapped in thick paper or food film and placed in cold for 24 hours. Now you are always ready to treat your guests with some-thing special! Just slice the ready salmon, add a bit of sour cream and put salmon slices on white bread toasts. A refined addition to this snack will be smoked salmon caviar.

Help yourself!

Bright colors of Lapland cuisine



GREEN GOLD OF LAPLAND

Innumerable kilometers of Finnish polar area are covered with forests. Lapland is poorly populated, that is why this land seems a borderless green sea if looked from a bird-eye view. Lapland inhabitants call their forests "the green gold".

A Russian expert notices instantly the differences between Russian and Lapland forests. Due to a quite pedantic and systematic care, most trees growing together are coeval and undistinguishable from each other. Such accuracy and symmetry do not influence the aesthetic and emotional constituent of Lapland forests.

Winter forests are covered with a thick white carpet of shining snow wrapping each pine and fir-tree. At first sight a traveler guesses why Santa chose these lands for his residence. From October to May the snowy Lapland becomes the real Winter Kingdom. In spring and brief autumn forests concentrate the most active life processes, they get mixed with multicolor leaf trees, give food and shelter for various animals rushing busily around. Only in this short warm period plants have a chance to grow. Beautiful cold winter brings dream to plants and animals till the next spring. That is why Lapland plants look smaller than their southern brothers of the same age.

The growth of a pine can be compared with a human life. Like a human being a pine is born a baby, then matures, brings fruits and becomes an old tree. Lapland tree is considered an adult at the age of 100–200 years.

The largest part of Lapland forests is a private property. According to Finnish laws, each cut tree in a private forest should be compensated with anew planted one. That is why the Lapland green gold is constantly replenished unlike other natural resources as oil and gas.

Private owners gather into voluntary associations which along with the public institutions monitor the refreshment of cut tree population. Another function of such unions is joint forestry management: associations hire rangers and other branch specialists who look carefully after forests, scrub underbrush, determine the cutting and replanting districts. The experience shows that the mentioned management variant is highly effective. That is why log houses made of Lapland pine are manufactured from the really healthy and high quality wood.

Lapland forests





WHAT IS
AN IKIHIRSI LOG HOUSE

Wooden houses are breathing. That is why the air inside a log house is always fresh. This circumstance undoubtedly influences the quality of human life which is especially important for allergic people. It is easy to maintain the temperature level in such a house because its walls keep warmth in winter and freshness in summer. Due to the organic structure of a log functioning as a natural air cleaner, these houses don't need an artificial air conditioning. Life in a log house is maximally convenient and healthy.

Experience of thousand years shows that wood is a most precious natural material. First, a log house maintains the optimal micro-climate for human life. Second, heat-isolating features of wood are also unique: it efficiently stabilizes warmth and humidity in any conditions.



For ages the most preferable materials in wooden construction were coniferous sorts of wood – pine and spruce. Ikihirsi trade mark uses Lapland pine which has hard wood and even trunk, thus being a perfect material for construction of A-class houses. It is a brand new level of house construction distinguished from others by its inner quality and advanced outer characteristics. Lapland pine grows over the Polar circle where severe climate and low temperatures condition slow tree growth (only 1-2 cm annually), its high density, hardness and gas permeability.

Advantages of Ikihirsi log houses:

- ecological friendliness,
- low weight (about 600 – 900 kg per m3) allowing a light and consequently less expensive basement,
- advanced ventilation qualities providing natural air circulation in premises,
- better water vapor qualities (moist and unhealthy instances evade from the beam ends, walls do not condensate moist and do not freeze, a house maintains its wholeness longer responding to the highest requirements),
- the inner side of walls doesn't demand additional treatment,
- low heat conduction allowing thinner walls (only 180 – 270 mm thick),
- easy for wood-working,
- winter mantling demanding no additional devices, special machinery or anti-freeze additives etc.,
- aesthetic outer design,
- extensive architectural capacities,
- the highest quality of wood treatment and secured natural protection layers providing low susceptibility to bio-factors,
- minimal wood shrinkage due to application of the shrinkage control know-how.

KELO – QUITE UNUSUAL



There is an unusual construction material almost unknown at the domestic market while being highly popular in Europe among well-off people with non-standard vision of things. It is Lapland dead standing pine that even received a special name of KELO. The chief advantages of KELO log houses are their exclusive ecologic level and no shrinkage.

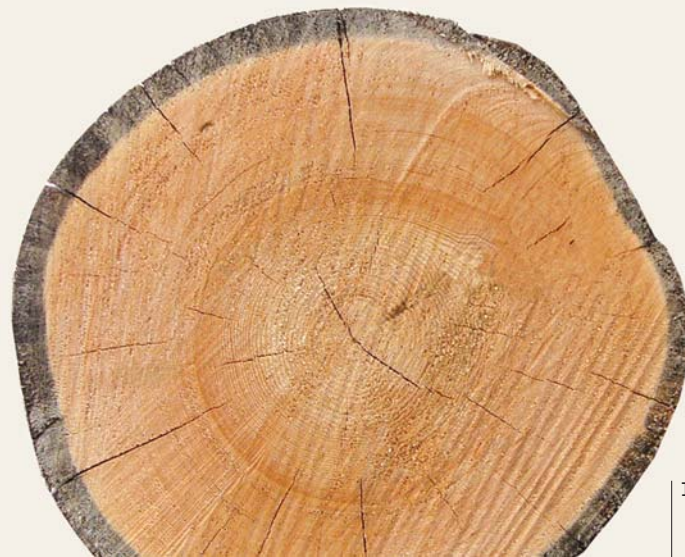
The real KELO derives only from Lapland polar zones. Experienced specialists study thoroughly and then treat carefully each tree and each trunk aimed for future houses, thus dead pine being a hand made construction material.

Reaching a certain age, a pine tree loses needles and branches, and for some reasons its roots cease to receive enough nourishment. The tree starts drying. If the tree keeps on standing erect, in several years it survives irreversible changes and becomes what we call KELO. It can be a lonely-standing pine tree or a group of trees.

Each KELO home is unique: it looks like a fairytale house. On the one hand, it shows the results of craftsmen handwork and traditional quality, on the other, the minimal processing allows exposing the true texture of the wood. The exterior of KELO house is quite unusual: thoroughly selected grey logs of various length and width. However, inside it embodies the dream of an ideal house: it maintains the optimal temperature both in winter and in summer. An authentic KELO house will protect its owners from winter cold with its cutting winds, from autumn rain storms and summer heat. KELO houses are absolutely ecologic: first, live forests are not involved in construction, second, a KELO house is filled with a pleasant natural tree fragrance, third, the texture of the material is exposed. The owner of such house shall feel close to nature. Clean and beautiful KELO wood is a natural and resistant material creating a special ambience in the house, a particular aesthetic and psychological atmosphere.

So, how does a KELO pine obtain all its exclusive features? A tree is dead, but under the hot sun, autumn rains, winter frosts and spring floods it receives amazing properties as firmness of a rock and resistance to harmful influences. The severe polar climate makes the pine wood strong like a stone.

Trees are known to grow very slowly in low temperatures, while the winter season lasts about six months in this region. This explains the high wood density, its strength and endurance. That is why wood craftsmen only need to make the minimal trunk surface processing. The handmade treatment only includes removal of the upper bark layer, touching not the cambium - the natural protection layer, as well as the pith of a tree. KELO pines dry naturally and that is why very slowly. Its most important characteristics and one of the chief advantages is its minimal humidity preventing appearance of pests and fungi.



GOLDEN PINE



Golden pine is a special type of wood used in log housing. It received its name from its unusual golden shade close to the warm glittering of the precious metal.

Golden pine acquires its color after a special processing. The logs of Lapland pine lose only the upper bark layer under the influence of the water stream of the highest pressure controlled by a specialist. After that logs are being naturally dried.

Hand worked Golden pine

Due to the humid procession, a log preserves all its protection qualities and resistance to hostile environment. Another vivid advantage of this material is the utmost ecologic level of houses made of Golden pine. The wood cleaned only with a stream of water doesn't lose its natural protection layer and doesn't need any additional chemical processing. Moreover, logs avoiding mechanical procession are still being live wood: the same structure, numerous growth rings, individuality of a tree. The cut of each tree is unique as a finger print. Taking off the bark a craftsman makes this print brighter and sharper while mechanical treatment erases the individual features of wood. Absence of mechanical processing and revelation of the real wood character makes Golden pine one of the kind.

House made of Golden pine doesn't resemble the others. Its hand-made gathering is individual for each project. There are no two absolutely similar logs. One getting in such house can't help touching the logs with a hand to feel its every curve. Such house allows free breathing and gives rest to the eyes. Golden pine is a rare case of external luxury combined with hi-tech and quality properties.



IKIHIRSI MATERIALS



However even a pine trunk may seem, its width varies from the top to the butt. For ages wooden houses were cut trying to adjust a log to another, a top to a butt, eliminating the natural rise of a tree trunk. But large-scale construction demands less complicated solutions.

One of such solutions is round log and profiled timber obtained by cutting off the upper (softer) wood layer. It results in the even width of a log and allows lowering expenses for house construction. The profile of Ikihirsi round log and timber doesn't resemble a traditional round profile: it has V-shaped scarves which are put between logs together with an insulant, securing the house from the wind and humidity. Modern production lines and strict material processing and technologic control guarantee the highest quality of Ikihirsi log houses.

Ikihirsi houses made of round log and profiled timber are attractive, warm, quick to build and have low shrinkage. But only laminated profiled timber allows predicting the exact shrinking of a newly built house.

Laminated timber logs are obtained with gluing together several (from two to eight) beams called "lamellae". Gluing is made with special hydraulic press machines using resistant, ecologically clean glue that does not prevent wood from "breathing". The laminated timber production lines are one of the most hi-tech nowadays.

Ikihirsi trade mark produces all these three materials: laminated profiled timber, round log and profiled timber. The final choice depends on the customer's preferences, his possibilities and targets of the construction.

Advantages of laminated timber:

The laminated log house shrinkage is fully predictable (1 cm per 1 m of wall), which allows exact calculations while construction.

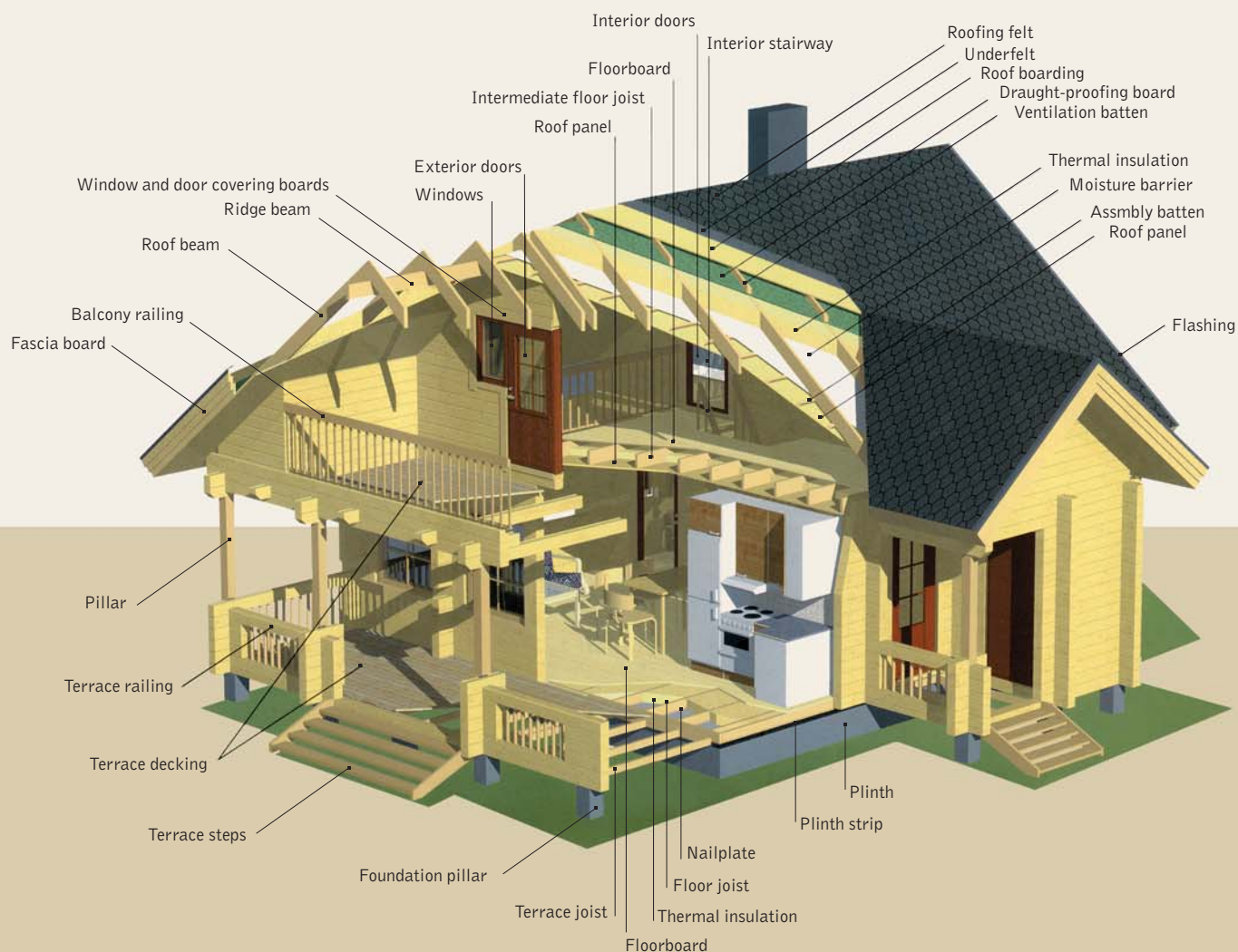
While gluing, beams with opposite wood fiber direction are put together, thus making the laminated timber firmer and stronger. It ruptures less and does not get deformed under the influence of humidity.

High quality of wood surface procession allows avoiding additional wall facing.

The laminated timber has no competitors in heat insulation, draftproof qualities and log joining density.



STRUCTURE OF A LOG HOUSE



PROJECTS OF IKIHIRSI HOUSES

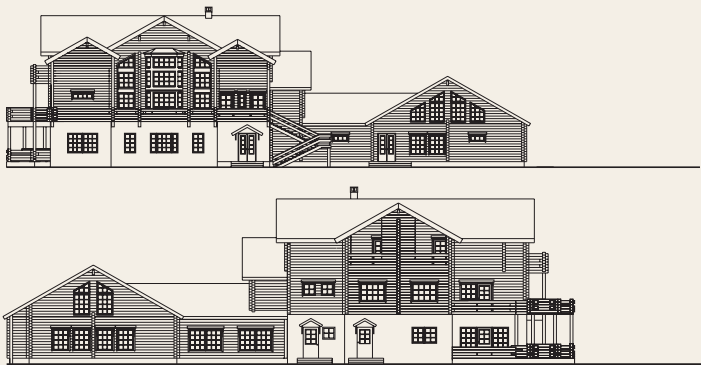
Our houses are manufactured in the modern enterprise Ikihirsi Oy located in the cities of Rovaniemi and Kemijarvi (Finland).

Ikihirsi Oy specializes in producing wooden private houses and public constructions.



RUSSIAN SWITZERLAND





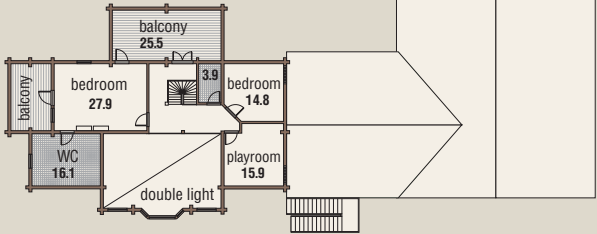
The attractive facade of the house hints on the luxury of the interiors. Despite its large size, the house looks exquisite. Its spacious balconies and porches produce the impression of airiness and lightness. A swimming pool, gym, fire place hall, numerous guestrooms and bedrooms create the ambience of a Swiss resort.

Large area of the house allows reshaping its interiors according to the owners' purposes: a comfy estate of a big hospitable family, mini-hotel or a rest and negotiations house for a prosperous company.

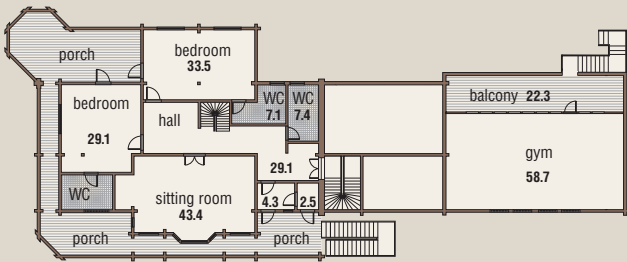


Gross area	1545 sq.m
Gross residential area	789 sq.m
Gross area of porches and balconies	179 sq.m
Total dimensions	13.5 x 17.4 m

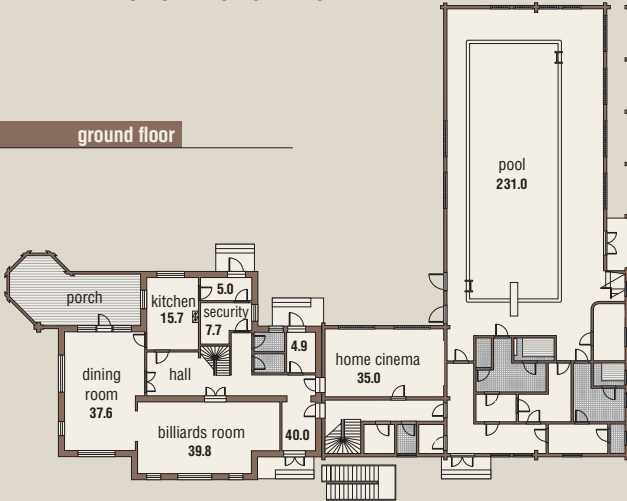
2nd floor



1st floor



ground floor



KAMCHATKA





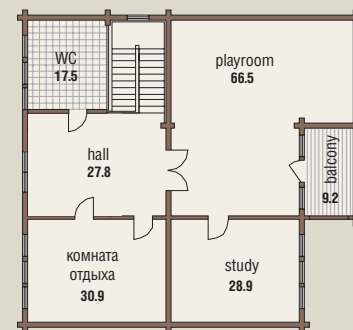
The name of the house reveals its resistance to severe Russian winters, its calm and romantic character like the nature of Kamchatka.

This project is aimed for permanent residence, as well as for seasonal rest. Ikihirsi materials and convenient interior outlines allow both variants. The number of bedrooms and other premises allow each Kamchatka inhabitant having own living space.

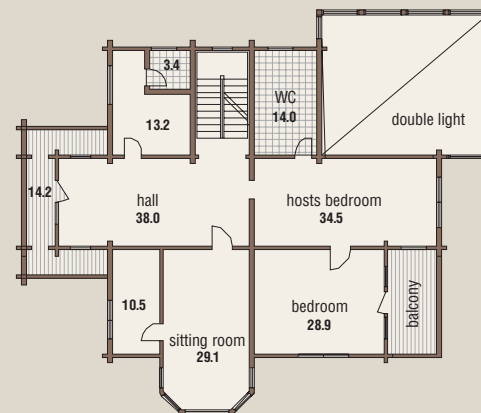


Gross area	898 sq.m
Gross residential area	743.7 sq.m
Gross area of porches and balconies	72.7 sq.m
Total dimensions	18.5 x 21.7 m

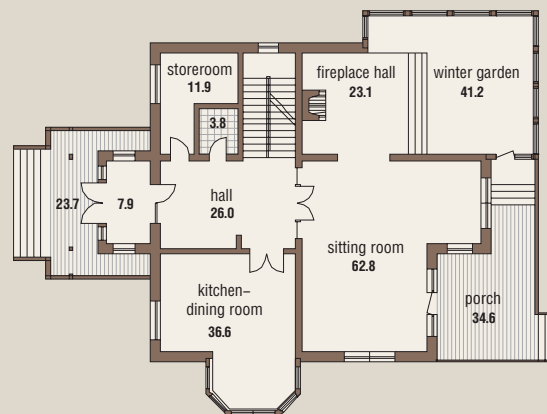
2nd floor



1st floor

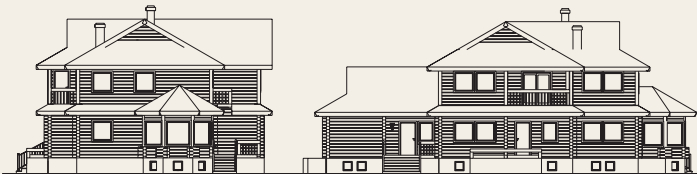


ground floor



VILLA





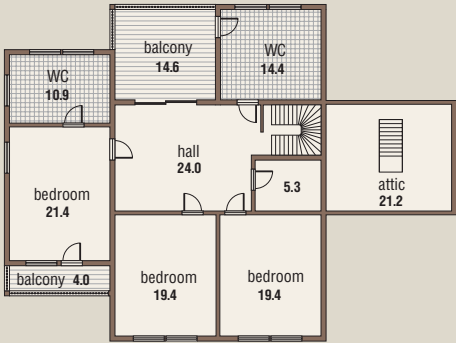
Villa impresses both with its dimensions and the exclusive architectural design. Each facade is individual, but however harmonically agrees with the entire image of the house. Villa's shapes are dynamic and expressive. Its interior is determined by a huge double lighted sitting room of more than 50 sq. meters. Large windows introduce the surrounding landscape into the room producing the fusion effect between the interior and the natural environment. The sitting room is followed by a dining room, with a panorama bay window and the exit to the open terrace.

The wall material is 205 x 215 mm timber. Walls are covered with a golden antiseptic sharpening the wood structure. Terracotta metal roof tile harmonizes with the wall color scheme. Villa supposes a pool variant as well.

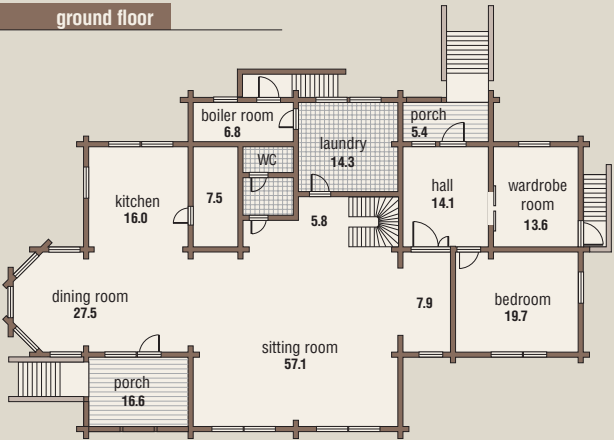


Gross area	610 sq.m
Gross residential area	526 sq.m
Gross area of porches and balconies	28 sq.m
Total dimensions	22.8 x 13.2 m

1st floor

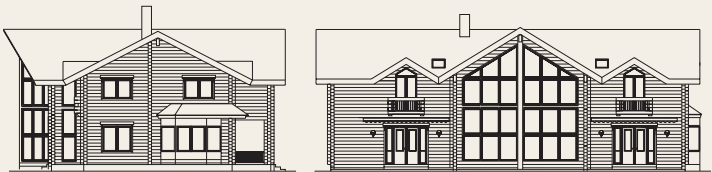


ground floor



AMBER



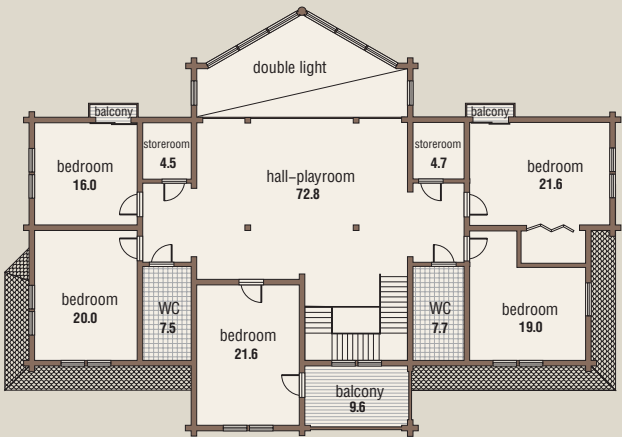


The best properties of the Amber House are the impressive exterior, a lot of various premises and their variability. The entrance leads to an unusual spacious sitting room filled with the light from huge windows of the front facade. The ground floor also accommodates a large fire place hall, a dining room combined with a kitchen, a study, nurse room, sauna block with shower cabins, rest room and a service room. The first floor includes several airy bedrooms for hosts and their guests.

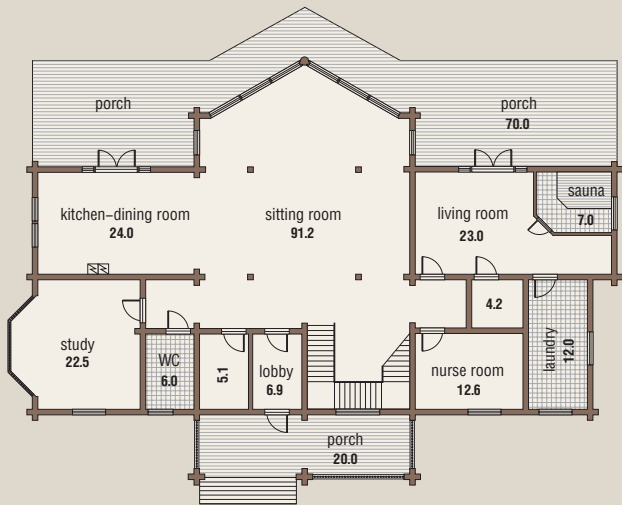


Gross area	563.2 sq.m
Gross residential area	410 sq.m
Gross area of porches and balconies	102 sq.m
Total dimensions	21.5 x 15.4 m

1st floor



ground floor



SUNNY





This house follows the Alpine style: it combines a stone ground level contrasting with the wooden upper part. Light and clean tones of the facade produce the feeling of space and freedom.

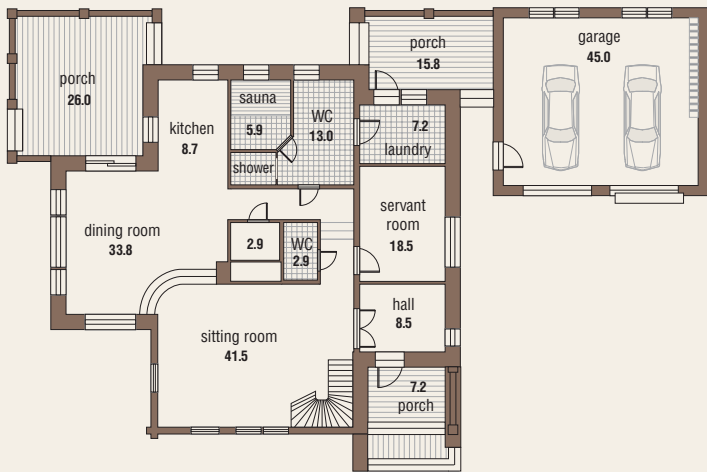
The entrance opens to the sitting room with a fire place which can also serve as a dining room. Then the passage leads us to a separate sauna block with showers and toilets. The first floor accommodates four rooms of 17 – 28 sq. meters. The chief bedroom has private toilets and a wardrobe.

One of the main advantages in Sunny is its developed system of covered porches. In any weather conditions they allow enjoying the beauty of natural environment and breathing the fresh air. A garage is built to the house but has no connections with the living zone securing it from noise and smells.

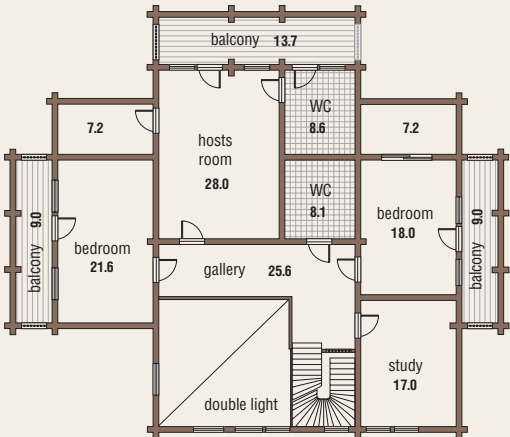


Gross area	447 sq.m
Gross residential area	277 sq.m
Gross area of porches and balconies	80.7 sq.m
Total dimensions	25 x 15 m

ground floor

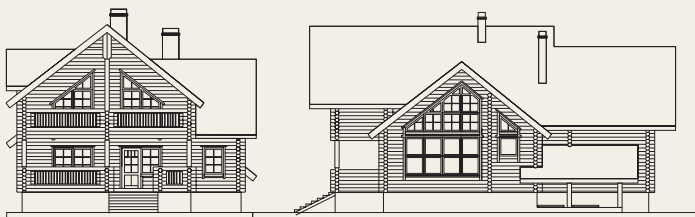


1st floor



ANASTASIA





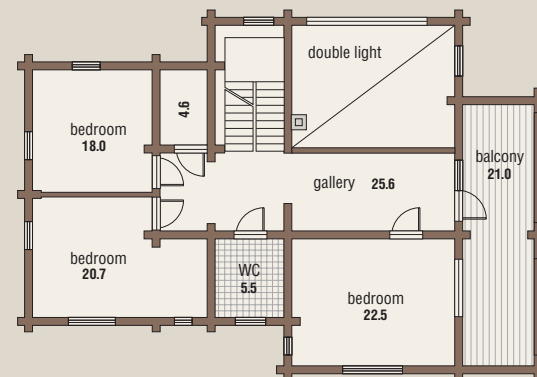
It is a spacious house built in Scandinavian spirit that can accommodate any family and their guests. Large area of windowing makes the house light, and spacious porches allow enjoying the fresh air. Strict functional zoning helps each member of the family join the others in a sitting room or find shelter in a private bedroom.

The roofing includes several Velux attic windows letting additional light to the first floor and enriching the plastics of its interiors.

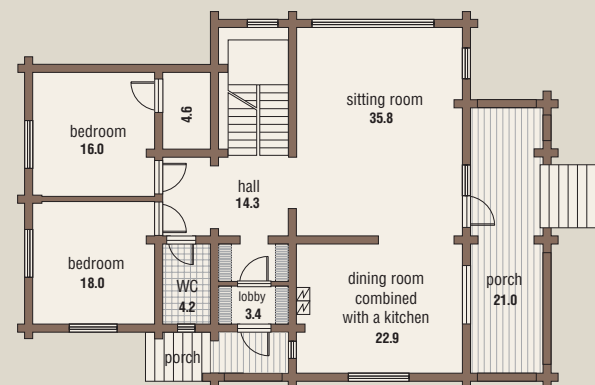


Gross area	408.3 sq.m
Gross residential area	321 sq.m
Gross area of porches and balconies	50 sq.m
Total dimensions	16 x 10.9 m

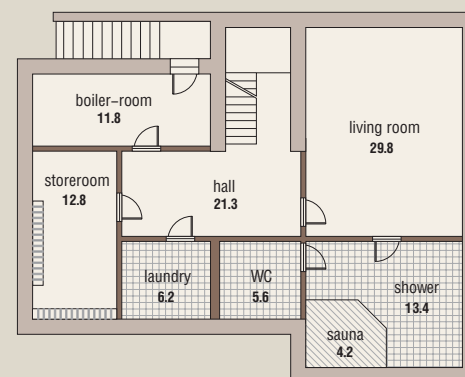
1st floor



ground floor

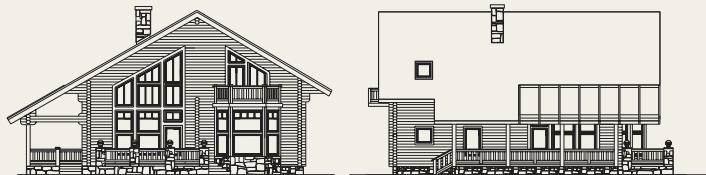


basement



SCANDINAVIA





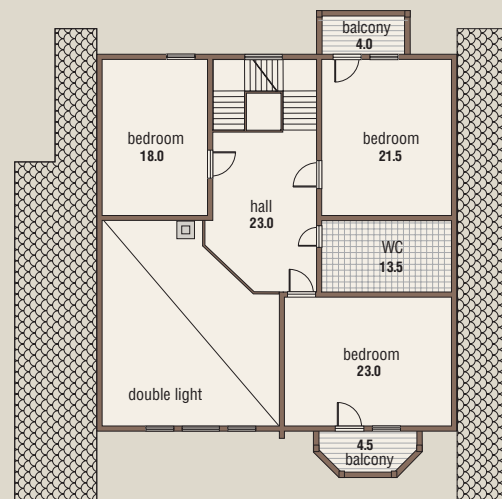
The house owes its name to its general architectural solution following the traditional Scandinavian architecture and modern trends in country housing of our northern neighbours. The lack of sunlight in our climate zone and shades produced by the natural environment are compensated with large windows of double lighted sitting rooms and the panoramic bay window of the dining room. The main principle of this classic Scandinavian project is the freedom of space.

The house planning is simultaneously compact (no loosely used zones and premises) and spacious. The space of the sitting room is 39 sq. meters, dining room combined with a kitchen – 27 sq. meters.

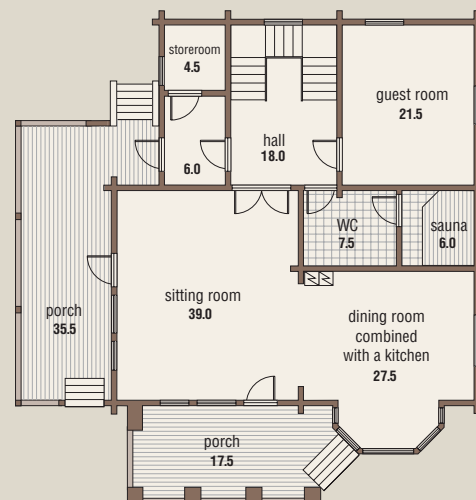


Gross area	319.6 sq.m
Gross residential area	229 sq.m
Gross area of porches and balconies	61.5 sq.m
Total dimensions	14.5 x 11.8 m

1st floor

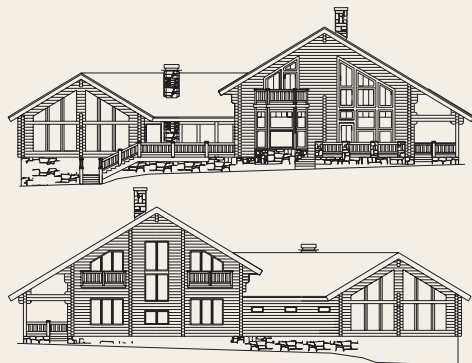


ground floor



SCANDINAVIA WITH A POOL



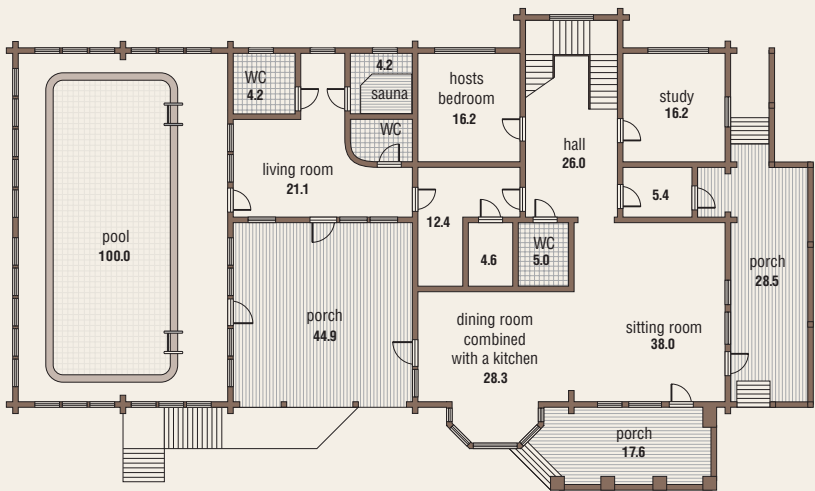


It is a spacious house in Scandinavian spirit for any family and its guests. Plenty of windows and large porches make it light and airy. Functional interior division allows a family gathering in a sitting room or hiding in private premises. The ultimate advantage of the house is the pool offering the pleasures of swimming and relaxing.

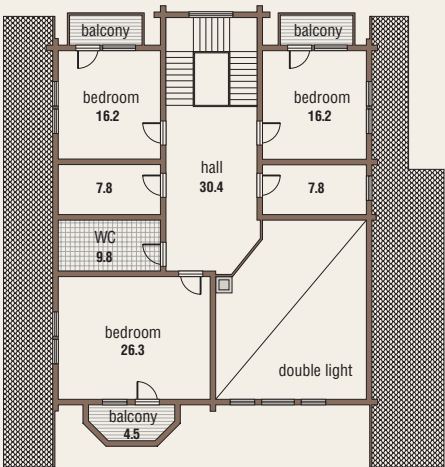


Gross area	564 sq.m
Gross residential area	307.8 sq.m
Gross area of porches and balconies	104.7 sq.m
Total dimensions	28.9 x 15.6 m

ground floor

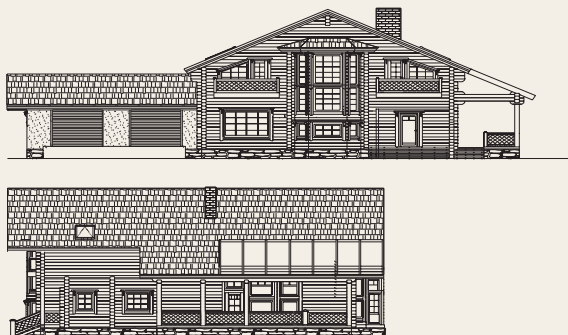


1st floor



SCANDINAVIA WITH A GARAGE





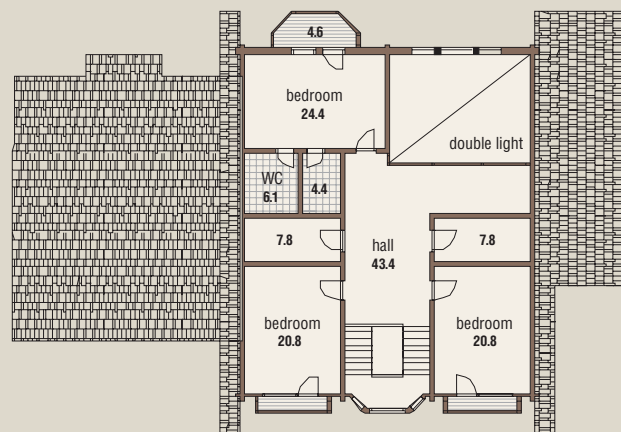
We offer one of several variations on Scandinavia, one of the most popular projects.

A double level sitting room is in the very heart of the house. Its particular feature is an interesting architectural trick – the overhang of the roof over the large window is made of transparent material to let as much light as possible in the sitting room. Due to this trick the porch is safely protected from bad weather and winds, the house acquires a sharper silhouette and the sitting room is filled with streams of air and light.

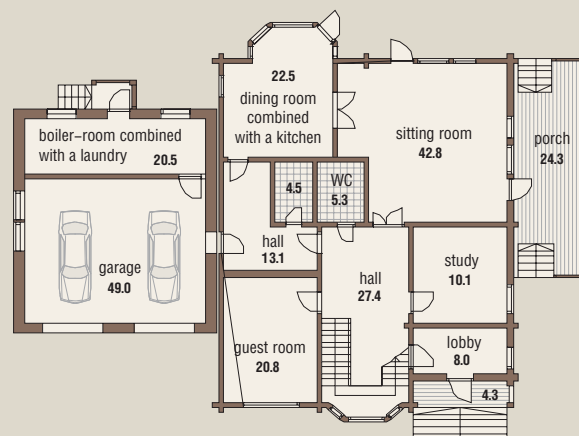


Gross area	395.5 sq.m
Gross residential area	290 sq.m
Gross area of porches and balconies	35.8 sq.m
Total dimensions	15.9 x 19 m

1st floor

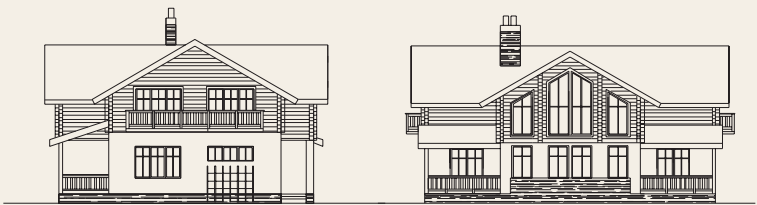


ground floor



RUBLEVKA CHALET





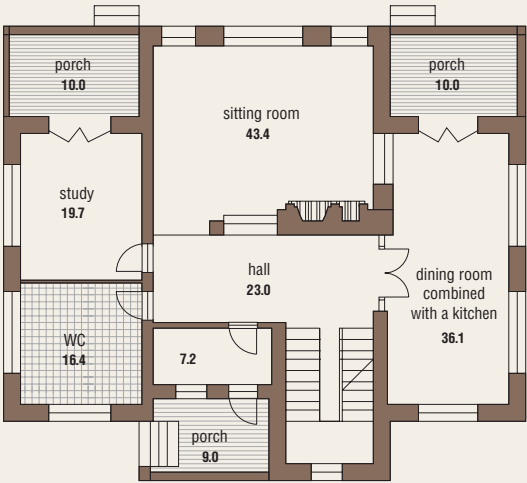
Rublevka Chalet is an elegant compromise between French chalet architecture and Russian environment. The given project allows combining the fineness of lines and large space.

Other advantages include a big number of windows letting sunlight and fresh air inside the house, balconies of the first floor and four porches with street exits. Such a pleasure to walk out of the house via a study or a kitchen, not making your path only through the main door!

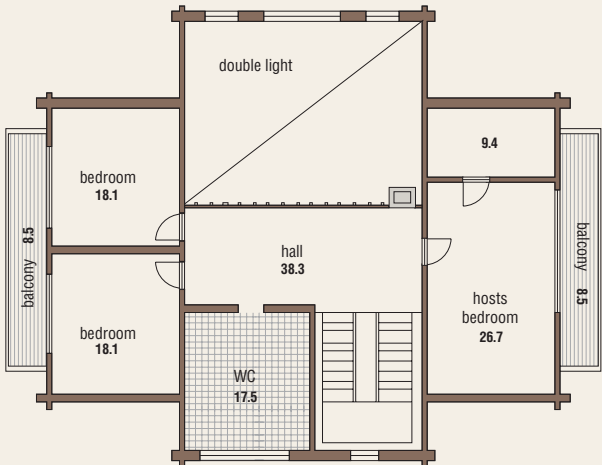


Gross area	381 sq.m
Gross residential area	289.2 sq.m
Gross area of porches and balconies	46 sq.m
Total dimensions	15.7 x 13.1 m

ground floor

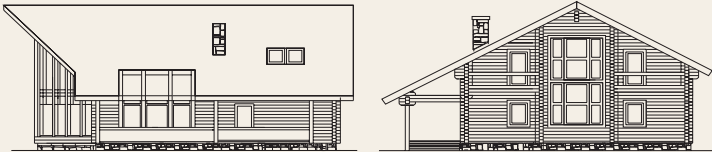


1st floor



FLAGMAN





Flagman is ideal for people fond of sea. Its exterior reminds either an impetuous warship or a luxurious cruiser. Anyway this "land ship" won't leave anybody untouched.

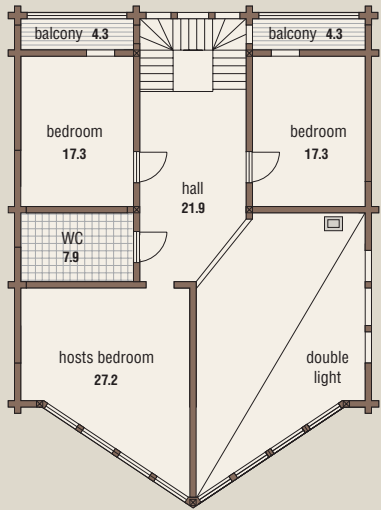
Flagman may boast plenty of advantages: impressive design, effective internal planning, large windows of the facade letting the surrounding landscape inside.

Flagman's unusual exterior and convenient interior are persuasive pro arguments. Its owner obtains a quiet harbour in the turbulent life sea.

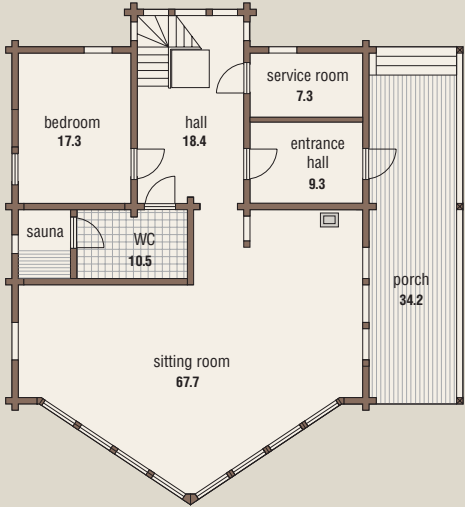


Gross area	290 sq.m
Gross residential area	222.1 sq.m
Gross area of porches and balconies	42.8 sq.m
Total dimensions	14.2 x 14.4 m

1st floor



ground floor



VIOLA





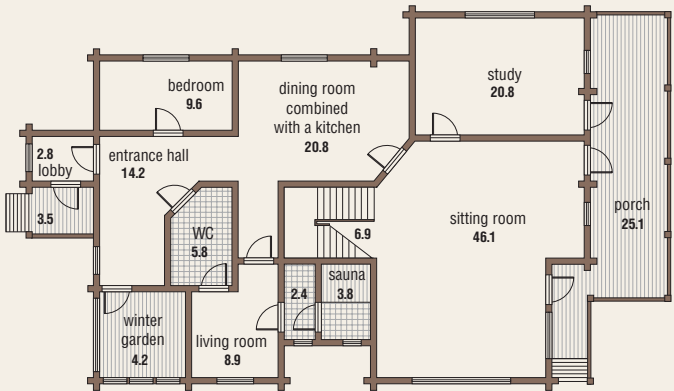
It is another typical Finnish project. The chief features of a Finnish home are thoughtfulness of details and pragmatics of purposes. As the real comfort and serenity are only possible with all little things conceived in advance.

Viola is a wonderful example of architectural skill to make the most common details unusual and meaningful. The revealed bearing structures unexpectedly become the exquisite decoration of facades. The intersection of horizontal and vertical lines creates strict and simple graphic ornament. Such design imposes a special internal rhythm that is why the house seems to have its own unforgettable tune.

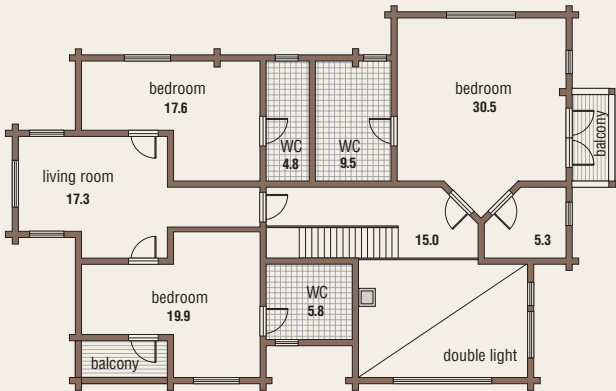


Gross area	345 sq.m
Gross residential area	267.8 sq.m
Gross area of porches and balconies	41 sq.m
Total dimensions	20.9 x 11.9 m

ground floor



1st floor



ARIZONA



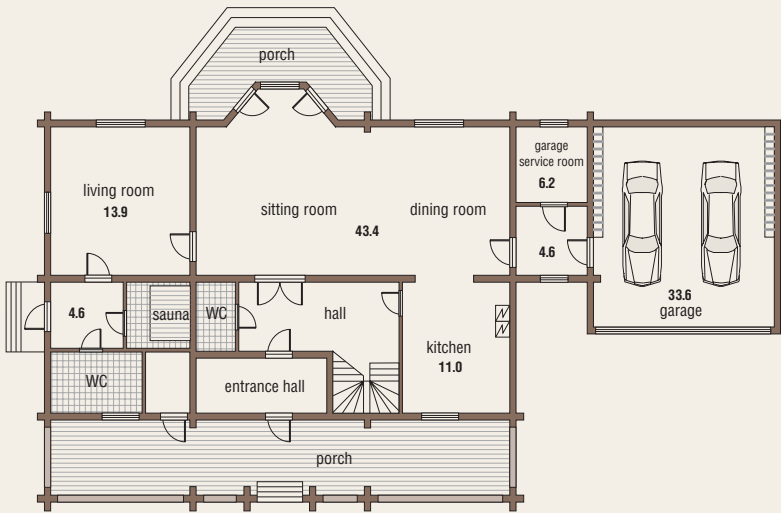


Arizona's architecture is uncommon for Russia. Its wide roofed porch lies along the entire house facade which is really comfortable and useful in our climate. The untraditional solution of the attic floor allows a wide range of variations for bedroom planning.

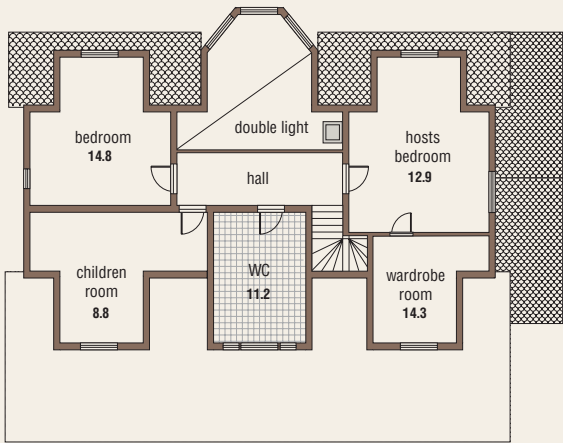


Gross area	325 sq.m
Gross residential area	200.4 sq.m
Gross area of porches and balconies	59.1 sq.m
Total dimensions	17.5 x 12 m

ground floor

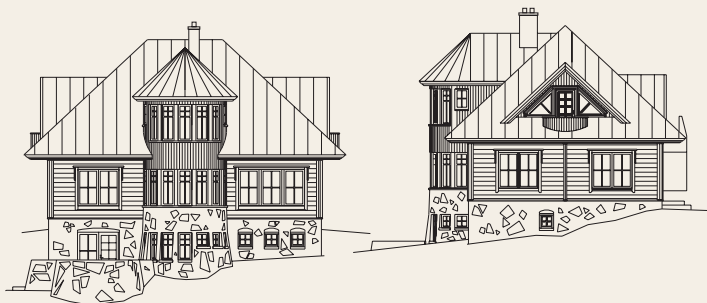


1st floor



CAPRICE



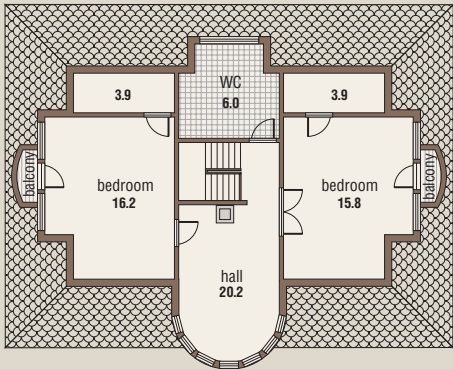


Our northern neighbours are often fond of small projects. This project is the first Finnish project of a large house. It has tree levels and a roofed porch, 3 bedrooms, 3 bathrooms and a sauna. A compass oriel of the ground floor contains a dining room with a marvelous panoramic window. Caprice is equally convenient for permanent residence and part-time rest.

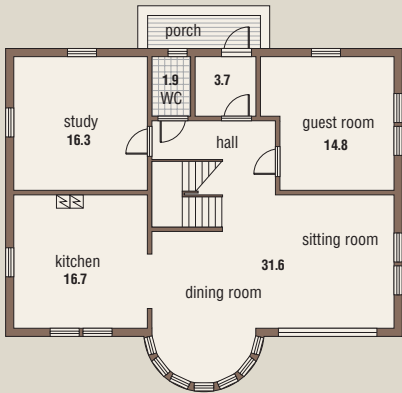


Gross area	283 sq.m
Gross residential area	236 sq.m
Gross area of porches and balconies	21 sq.m
Total dimensions	12 x 8.7 m

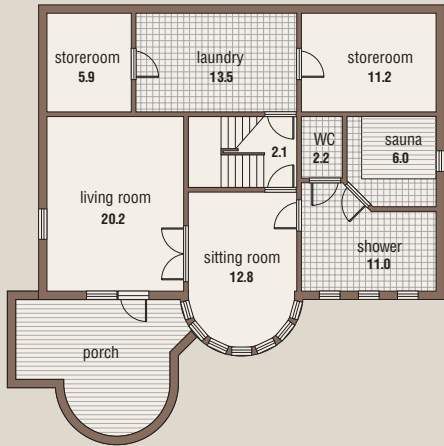
1st floor



ground floor

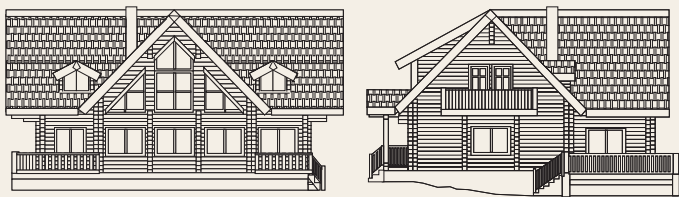


basement



SWEDISH HOUSE



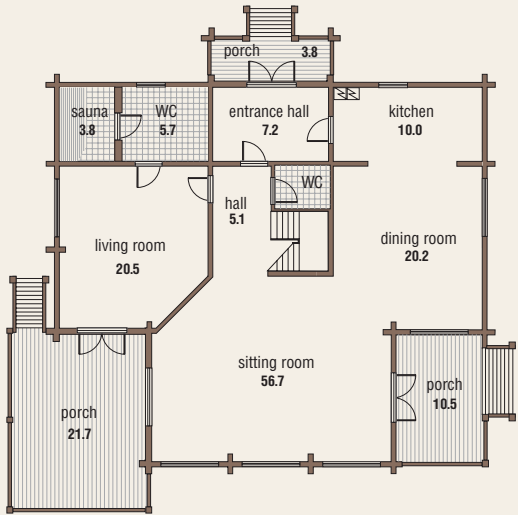


Swedish house owes its name to the combination of Scandinavian brevity of lines and good capacity. This house offers all opportunities for permanent comfortable residence: several bedrooms, spacious rest zone and large porches. The inner wooden staircase is a bright decorative element of the sitting room. Symmetry and equal proportions of the house reveal its chief idea of space and simplicity.

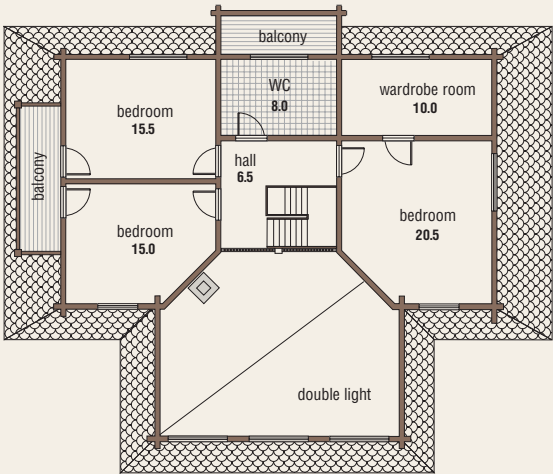


Gross area	281.6 sq.m
Gross residential area	208 sq.m
Gross area of porches and balconies	48 sq.m
Total dimensions	113.2 x 11.9 m

ground floor

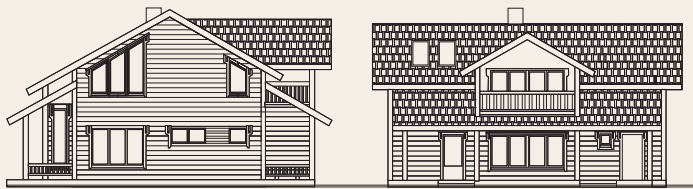


1st floor



SUOMI





It is a classic, spacious and symmetric house placed among hundred year old pine trees. The best combination of comfort and style! The double lighted sitting room impresses with its airy volumes and lightness. The first floor is occupied with the hosts' bedroom and two guest bedrooms.

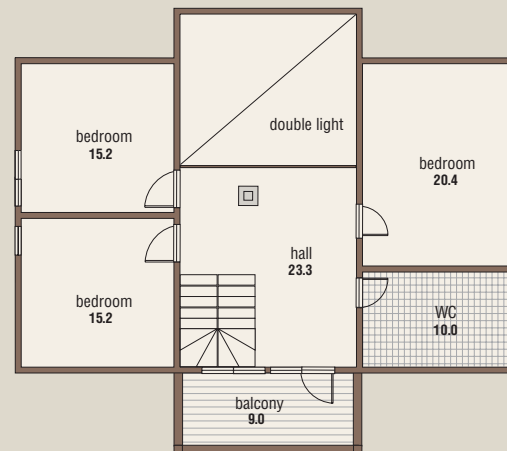
Symmetrically arranged vertical windows and attic windows look especially impressive from outside. Internal comfort completes the harmonic combination with bright outer design.

This project introduces a new "city corner" technology: outer corners of the walls are made even, without overhanging overcut beams. Thus the house perfectly fits into both urban and country side landscape.

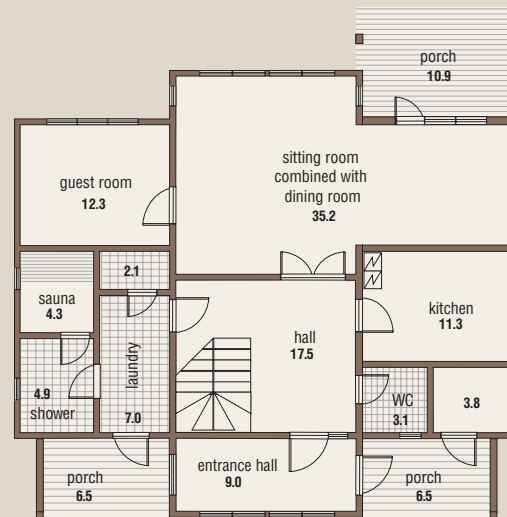


Gross area	250.3 sq.m
Gross residential area	194.6 sq.m
Gross area of porches and balconies	32.9 sq.m
Total dimensions	12.5 x 11.2 m

1st floor



ground floor



LAPLAND





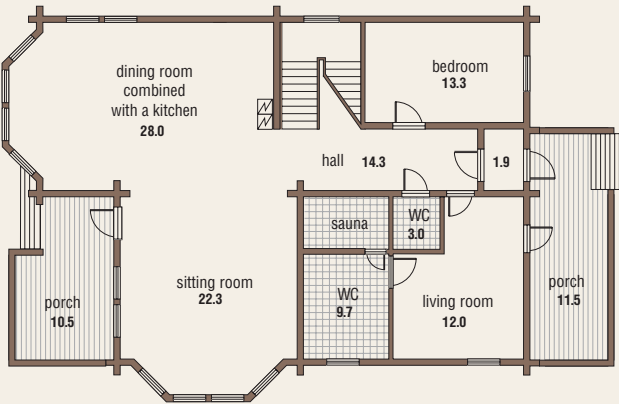
This project is one of the best examples of an interesting, intensive and efficiently used inner space in a relatively small house. A double lighted sitting room with a fire place opens to the natural environment with a big glass oriel.

The sitting room is joined with a kitchen and an oriel dining-room of 26.8 sq. meters. The sitting room outgoes to the roofed porch. The fire place can be used as an additional heating device.

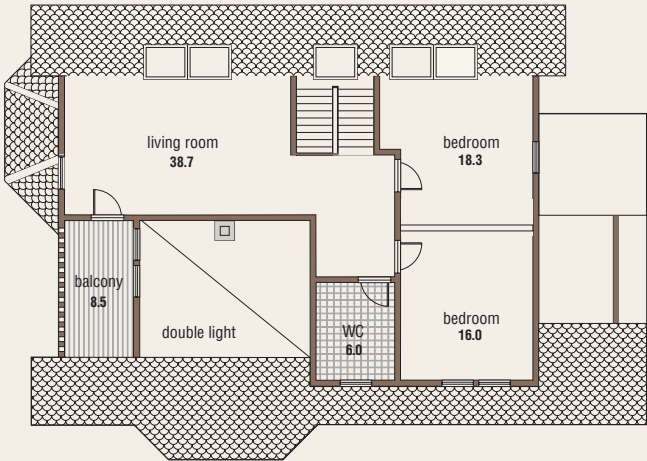


Gross area	235.4 sq.m
Gross residential area	183.5 sq.m
Gross area of porches and balconies	30.5 sq.m
Total dimensions	12.3 x 8.7 m

ground floor

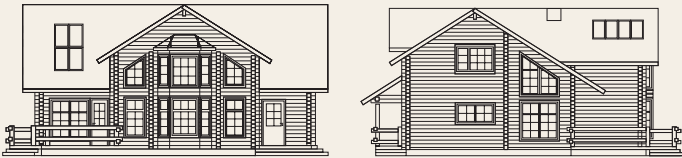


1st floor



TIMUR





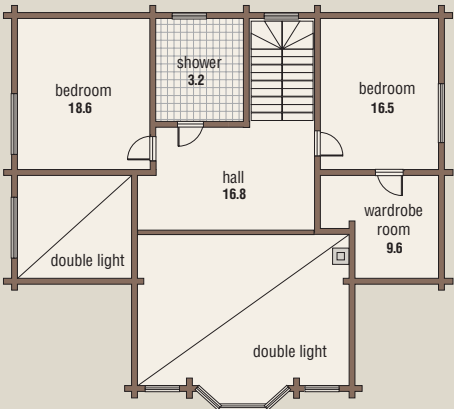
A special feature of this house is a large open porch with the exit to the garden and a very light two-level space of a sitting and dining rooms. Spacious bedrooms and bathrooms create atmosphere of comfort and leisure.

Timur is a very light, no-dark-corners house. Attic windows over the dining room allow unusual perception of interior volumes. The owners can plunge in the world of architectural poetry accompanied with the unusual play of sunlight in the common cubic volumes. The light spot will fall to your favorite arm-chair or a sofa while you may enjoy the garden view, listen to bird singing or watch the sparkling stars.

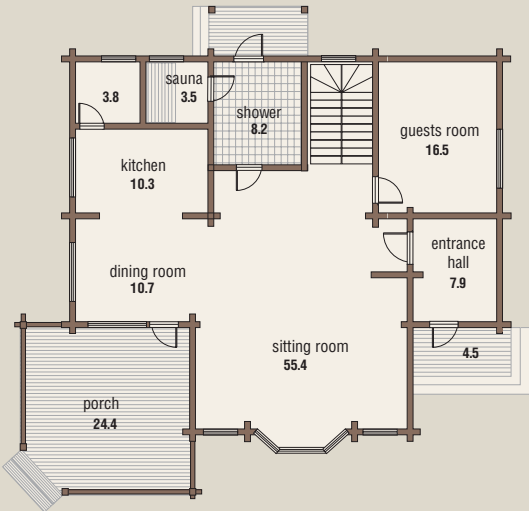


Gross area	233.2 sq.m
Gross residential area	189.3 sq.m
Gross area of porches and balconies	43.9 sq.m
Total dimensions	11.4 x 12.9 m

1st floor



ground floor



KARELIA





The name of the house associates with the romantics of northern nature. The wood odors inside the house will always remind of the rich forests in this beautiful region.

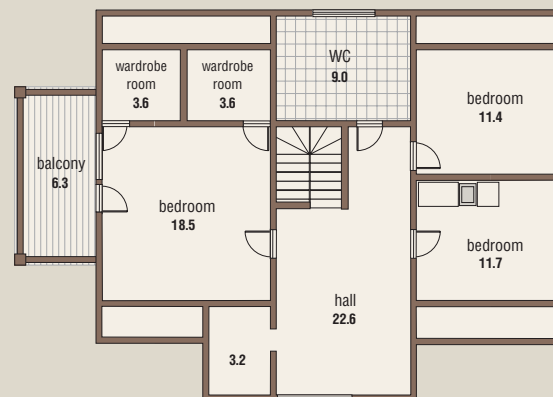
Karelia is a perfectly designed house for a friendly family of 5 members. A large 16.7 sq.m hall and spacious 27.5 sq.m sitting room are situated on the groundfloor. On the first floor a 22.6 sq.m hall unites three bedrooms for hosts and guests.

A successful zoning of the attic is emphasized with the original lighting. For instance, the sunlight penetrates the rest zone of the hosts bedroom (18.5 sq.m), as well as the wardrobe rooms. Attic windows in the kids' rooms allow placing writing tables right under the stream of sunlight: such a convenience for schoolchildren!

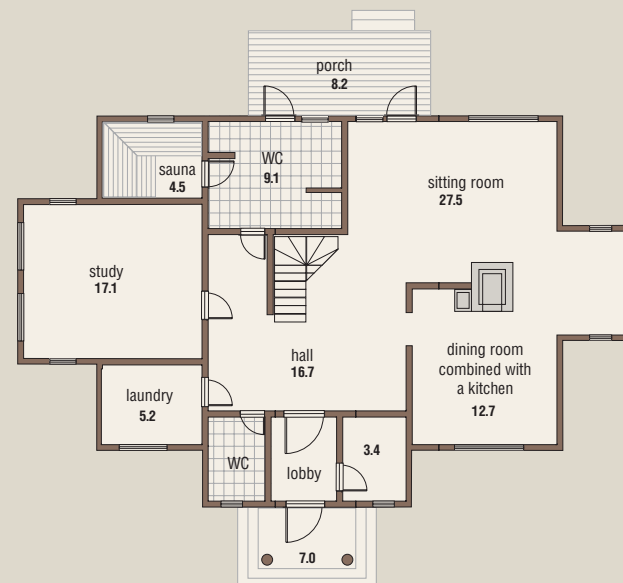


Gross area	229 sq.m
Gross residential area	186.2 sq.m
Gross area of porches and balconies	21.5 sq.m
Total dimensions	15.5 x 9.7

1st floor



ground floor



CLASSICS guest house





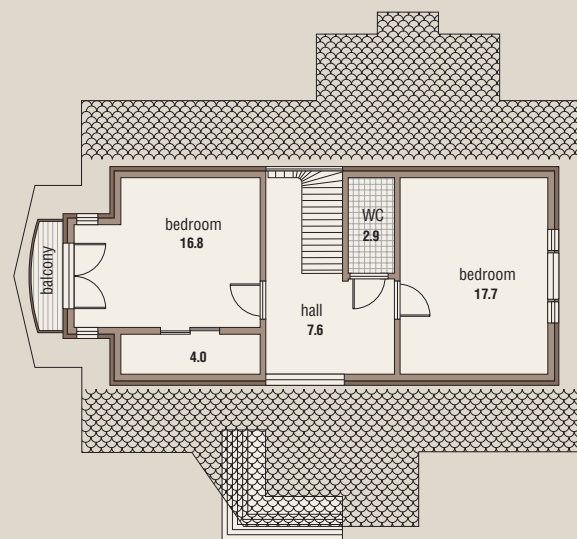
This symmetrical house with harmonic proportions is the authentic classics of architecture. A small French balcony with light metal railings brings airiness and charm to its exterior.

The small size doesn't influence its functional value. The total area of the house is 154 sq. meters, 10.5 x 9.8 m. The space of the groundfloor and the first floor create cozy and warm homelike atmosphere.

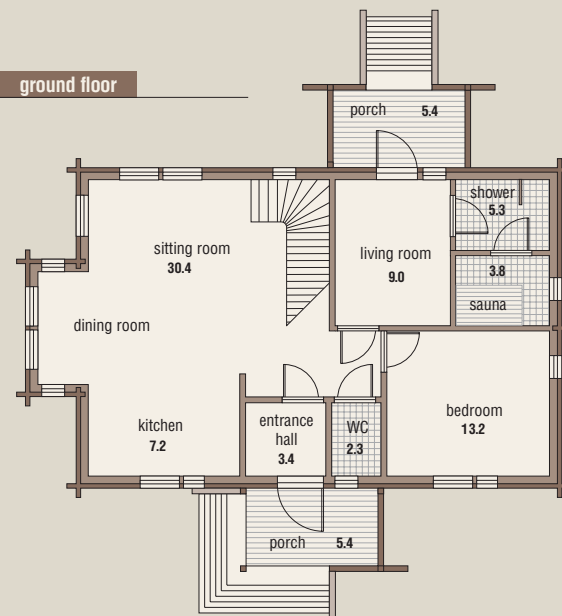


Gross area	154 sq.m
Gross residential area	123.6 sq.m
Gross area of porches and balconies	16.5 sq.m
Total dimensions	10.5 x 9.8 m

1st floor



ground floor



DATCHA guest house



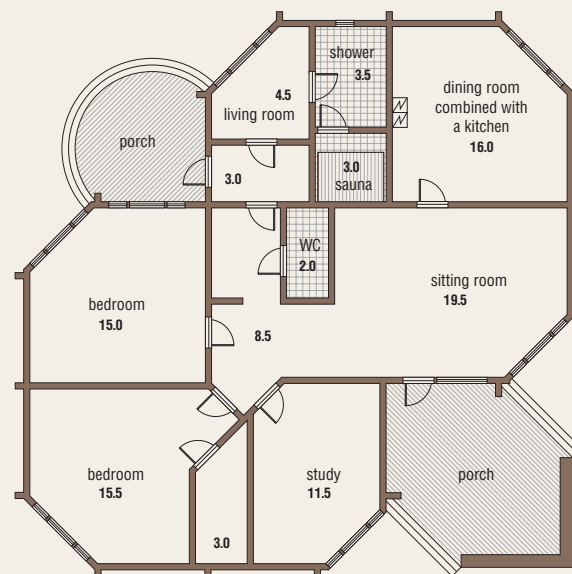
Datcha Guest House will be enjoyed by those tired from sharp angles of the big city.

This project is quite untypical for wooden housing. It applies an original technique escaping right angles. Diagonal walls are based on the insulated wooden framework. Although the house is small, it contains everything necessary for comfortable living of three persons. It has two bedrooms, a study, a spacious sitting room with a fire place and the entrance to the porch, a kitchen combined with a dining room, as well as a sauna and a rest room.

Such house perfectly fits into any natural landscape like Karelian pine forests, fields of Moscow region or Finnish lakes.

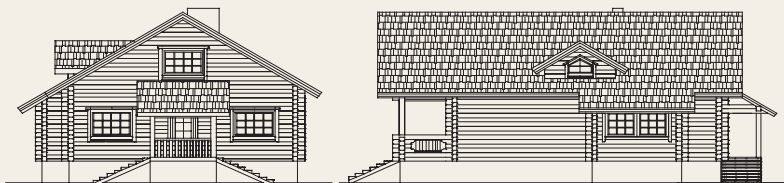


Gross area	135 sq.m
Gross residential area	110 sq.m
Gross area of porches and balconies	13 sq.m
Total dimensions	12.9 x 12.9 m



ESTATE guest house





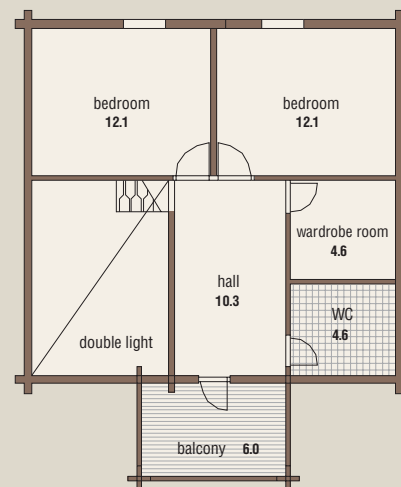
The chief characteristics of this house are its expressive overhanging roof, spacious roofed porch and a loggia on the first floor over the main entrance.

The main area of the groundfloor is occupied by a sitting room with a fire place and a staircase leading to the first floor. This project can suppose two variants: with a sauna, shower and a small rest room or without it. A sauna can be replaced with an extra bedroom. The first floor hosts two bedrooms and a staircase hall.

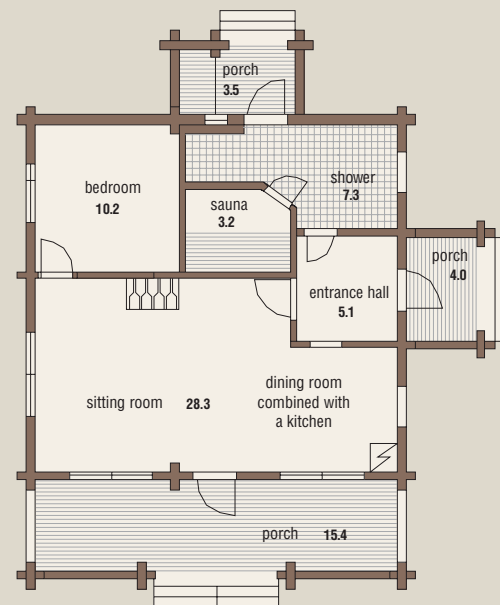


Gross area	140 sq.m
Gross residential area	97.8 sq.m
Gross area of porches and balconies	29 sq.m
Total dimensions	8 x 7.8 m

1st floor



ground floor



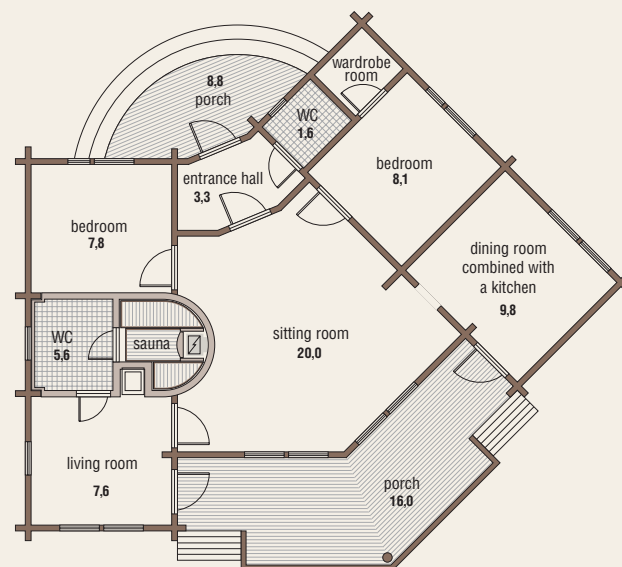
BREESE guest house





This ship-looking small but original house can be located on the bank of a lake or a gulf. It is a perfect dwelling for lovers of water sports and leisure. It shall also fit perfectly into a forest landscape where it will remind of a waving lake surface. It is an ultimately functional house that despite its small size allows feeling the vast of domestic nature.

Gross area	103 sq.m
Gross residential area	69 sq.m
Gross area of porches and balconies	24.8 sq.m
Total dimensions	12 x 10 m



KELO



KELO is a dead standing pine having dried naturally. This construction material is called the most ecologic because it is absolutely unsusceptible to any harmful influences - neither moist nor bugs.

The final cost of KELO houses largely depends on the individual approach in the control over every tree and hand wood-processing. Before a tree is considered useful for construction, specialists conduct its long-term monitoring at the spot of growing. After a positive decision, a dead standing pine tree is carried from the forest with the help of special machinery. Every centimeter of it is hand-processed. Only a pine experienced all these stages can bear the name of KELO and be used for construction of various rough and romantic log houses.

KELO houses are the visiting card of Ikihirsi trade mark. Houses listed in this catalog are a small part of the architectural richness that can be created from this noble material.

KELO accepts no patterns or limitations. KELO house is supremely individual and fits into any landscape.

KELO - fairytale material

KELO houses are often made individually for a particular customer, which guarantees absolute interior comfort and perfect design solution.

KELO is a construction material that still remains a part of nature: it has no shrinkage, it is ecologically friendly, it doesn't need extra outer and inner processing with any chemical substances, and its color doesn't fade.

Ecologic factor is a chief principle of Ikihirsi trade mark. So, Ikihirsi houses are known for their high quality materials, thoughtfulness and security of constructions. KELO houses are the triumphal combination of ecologic principles, quality and traditions.



GOLDEN PINE



Ikihirsi trade mark emphasizes style individuality in wooden architecture.

Admiration of an on-looker watching a Golden pine house can't be measured by figures and facts. The owner of such a house exposes his perfect taste and announces his life style. Ikihirsi Golden pine house sparkles with its unique character and multi-functionality.

Even the simplest project made of Golden pine becomes attractive and plays with natural beauty of logs. Its amber color reflects the warmth of a home fire and makes living there full of sunshine and pleasure.



House of amber color

Both small private houses made of Golden pine and multifunctional leisure and trade centers look attractive and beautiful in surrounding environment. The view of Golden pine private houses and public constructions evokes feelings of relaxation and calmness.





Dear friends,

Thank you for your attention to Ikihirsi house catalog. We hope you have already picked up an interesting project.

The choice of a log house can't be casual. It shows a conscious (or subconscious) urge of a person for self-cognition, self-improvement, returning back to nature. Deciding on an Ikihirsi log house can't be random as well: such house spells and attracts with its appearance, conquers with the beauty and harmony of lines.

Houses from this catalog are available in various materials: laminated timber, laminated log, round log, Golden pine or KELO.

The listed projects are not final and can be improved or changed in accordance with customer's requirements. Ikihirsi trade mark represents log houses, the chief advantages of which are ecologic materials and thoughtful architectural solutions.

We express our gratitude to our Russian partner – PetroStyle Co and its brand "Rovaniemi – Truly Log Houses" for providing us with the design of this catalog.